

THE WORD

OFFICIAL NEWSLETTER OF THE
WOLSELEY CAR CLUB NEW ZEALAND INC

MAY - JUNE 2013



Great Cars and Good Friends - This is Our Club!

OUR CLUB OBJECTIVES:

- To promote interest in Wolseley vehicles.
- To arrange social functions for the purpose of promoting the objectives of the club.
- To promote and encourage the efficient maintenance of members' vehicles.
- To render technical assistance to members.
- To produce a newsletter regularly as a vehicle for the exchange of owners experience, technical information, the sale and exchange of cars and spare parts, or any other matters of interest to members.
- To maintain a library of information on the history, maintenance, repair and modification of Wolseley cars, to be available to members.
- To maintain a central register and stock of spares which may be established to assist members.



Club website: www.wolseleycarclubnz.co.nz

HOW TO CONTACT US:

National President:

Gordon Duthie (Beryl)
13 Maryport Street
Lawrence, Otago 9532
Ph 03 485 9543, Fax 03 485 9053
email gbduthie@xtra.co.nz

National Secretary:

Winton Cleal (Ruth)
183 Cecil Road, Wadestown
Wellington 6012
Phone 04 472 1878 (hm) 0211784253 (mobile)
email fincle@clear.net.nz

Auckland:

Noeline Billing (Paul)
P O Box 23-393
Hunters Corner
Manukau 2155
Email nbilling@ihug.co.nz
Phone (09) 278 3944

Waikato/Bay of Plenty:

Stephen & Janice Belcher
6 Bristol Ave, Brookfield
Tauranga 3110
email sabelcher@value.net.nz
Phone 07 576 3773

Manawatu:

Michelle Thompson (Andrew)
3 Neptune Street
Danniverke 3910
email: bellaprints@inspire.co.nz
Phone 06 374-8430

Nelson/Marlborough:

Bryan Stansbury (Gaylene)
113 Whitby Road
Wakefield, Nelson
Phone (03) 541 8255
stansburys@clear.net.nz

Christchurch:

Allan Francis (Betty)
19 Richard Seddon Drive
Northwood, Christchurch 8051
Phone (03) 323 7559
Email allan.betty@xtra.co.nz

Southern Region:

Bill Obers (Kathy)
154 Ross Street
Grassmere, Invercargill 9180
Ph 03 2159765, or 0274 321 776
email obers@southnet.co.nz

National Spare Parts Enquiries:

If unable to be handled by your local Branch, contact: Ray Willoughby (Wendy)
14 Leander Street, Christchurch 8052
Phone (03) 352 9016
Email: kitty.willo@xtra.co.nz

All Newsletter Enquiries:

Send to: Colin Hey (Jenny)
34 Rossington Drive
RD6, Christchurch 7676
Phone (03) 359 8737
email: Colin.Hey@scirt.co.nz

Disclaimer: The views and opinions in this publication are personal to the authors, and not necessarily the official views of the Wolseley Car Club of NZ Inc.



PATERSON BROTHERS TYRE SERVICES

**Now incorporating Beatson Motors, with a full
Computerised Laser Wheel Alignment Service**

**196 Worcester Street, just East of Latimer Square,
Christchurch.**

Phone (03) 365-0876 Fax (03) 365-0875

Our building has now been rebuilt and we are up and running again.

**Show me your Wolseley Club Car Membership Card
when discussing your tyre needs. I will still go out of my way to ensure your
vehicle is fitted with the correct tyres that suit your type of driving.**

**For your classic Wolseley or your modern car or 4WD, check
with us at Paterson Bros.**

Instant and quality service assured, with competitive prices guaranteed.

Lindsay Patterson.

EDITOR'S STUFF

There are a couple of descriptors that are used to indicate something that is either boring, or takes a very long time, or even both. One is "it's like watching paint dry", and the other is "it's like watching grass grow". Well, at home this month we have been watching grass grow, and believe it or not, getting pretty excited by it. After what has been months watching the ground around the house get turned up, muddled up, dug up, and dusted up, we finally got to the point where we could get a contractor in to do the final levelling job and then sow the



lawn around the house. Because the ground is full of stones, I used a contractor I know really well from Ashburton who has a stone-burying machine, which brings the topsoil to the surface and seeds the ground as it goes. Our timing was pretty good – the grass was sown less than one week before the rain started, and it has of course had a pretty consistent drenching a few times already. We can now see the seed starting to germinate, and it looks like we've got a pretty good strike, so in a couple of months there will hopefully be plenty of green areas around the house.

The very best thing about all of this is that finally it means a huge reduction in the amount of dirt and dust getting inside the shed and over the cars, so some time in the next few weeks I'll do a pretty good spring clean in the shed, and it will hopefully make everything look a lot better. The next phase around home is to begin getting some shrubs and trees planted, and to finish off a front fence. It's interesting seeing what others up to in the subdivision – who has got fences built, driveways and paths down, lawns in, etc. Most seem to be making about the same progress as us, others give it a huge hit as soon as the house is finished and are pretty much sorted straight away. Our pace has been as fast as most, the good thing being that we've had time to think things out as they've progressed, the downside being that we had to put up with some dust and mess along the way.

Two weeks ago I got a shock to see a photograph in The Press of several Rovers that had been caught up in a shed fire in Rangiora. I immediately knew who the cars belonged to – a passionate Rover owner and collector that I've known for many years. He is to Rovers as I am to Wolseleys, and I just knew that he would have been devastated by the sight of his decades of work and collecting sitting damaged in his shed. I spoke to him a few days ago, and got the full story on what happened. It seems an arsonist was in a contractors' yard behind his property, and used some diesel syphoned out of a tank to set fire to some tyres that were stacked against the rear wall of his shed. Although it was a concrete shed, the flames shattered a window above the tyres, and from there the flames spread into the wooden roof structure of the building, and then travelled along the length of the building. Luckily one of the neighbours spotted the flames and called the fire brigade, but by the time they got there, the fire had gone the whole length of the roof of the 22m long shed, and items against the walls, and one of the cars was well alight. He said the firemen were brilliant and did all they could to save the cars (there were 11 of them in the shed), and

Editor's Stuff - continued



Aftermath of the fire in a Rover enthusiast's shed

now that they are all out and inspected it fortunately appears as though only one of them is beyond repair. Many of his cars were in concours condition or in excellent original condition. Most have paint damage, and some have damage like melted lenses and trim, and he reckons it's going to be a long time before he has them back the way they were. One of his biggest losses is years and years of collected and purchased spares parts – a lot of it new-old-stock, which simply cannot be replaced. He also had to find space to put all the cars while he has the shed re-built, which won't be a quick job by the time he gets consents, permits, and then actually finds a builder to do it (they are a bit scarce in Christchurch just now). All in all, a sad story, but he said the very best thing that has come out of it is the offers he's had of help from Rover Car Club members, neighbours, and car enthusiasts from all around Christchurch. He said he felt like giving it all away straight after the fire, but he reckons it's these people that quickly put an end to those thoughts, and now he just wants to get on and get everything fixed up and carry on. This is exactly what we found after the earthquakes. We certainly need good friends, fellow enthusiasts, and good neighbours, and we're all the richer for it.

We had a big day at home last week, when Matthew turned 21. It only seems like a few years ago when I was wheeling him down to the park in a pram. Now he drives me to Car Club meetings in his Wolseley. Where has the time gone??

Have a good month.

Colin



Matthew blows out the candles

Deadline for next Wolseley Word:
Friday 31st May 2013

CHAIRMAN'S REPORT

Hi members.

I'm in the middle of problems with my computer at the moment, and I fear it won't be long before I have to take it out to the shed to fix it with the axe!

Unfortunately this has meant I'm way behind with normal business, and due to the fact that I'm also having ongoing issues trying to create and send emails, I cannot get my usual column off to Colin.

This coming month I'm looking forward to the National Rally draft programme coming out – it will be good to start to make plans for the event and to have something positive for us all to look forward to in the coming 9 months or so.

Hopefully normal email and computer service will be resumed next month, and life will be normal again. I find it particularly frustrating not being able to fix things when they don't work properly – give me our Wolseley any day!!

Safe travels,

Gordon Duthie.



Ian Sprosen's 15/50 glints in the sun at a recent Christchurch Branch outing

BRANCH NEWS and EVENTS

Auckland Branch

News and Coming Events

I'm just back from Melbourne, so my apologies for the short report this month.

The train ride to the Waitakeres has been deferred at present and will take place later in the year. The movie evening at Westwind Theatre is now to take place on the 7 July 2013 for a mid winter dinner and movie.

Coming Events:

Sunday 26 May 2013 - Trip to Waingaro Hot Springs with a difference. Meet at the top of the Bombay off ramp at the Caltex Service Centre on the left at 10.30 a.m.

Sunday 7 July 2013 - Mid winter dinner and movie at the Westwind Theatre at Riverside Road Avondale. The cost is \$25.00 per head and we are to be there at 4.00 p.m. for a 5.00 p.m. meal followed by the movie. Please confirm numbers to Noeline Billing 278-3944.

Sunday 28 July 2013 - Auckland Branch AGM to be held at the Ellerslie War Memorial Hall at 2.30 p.m. Note your diaries now,

As you can see there are events planned to stimulate you all.
Noeline Billing

Bay of Plenty News and Events:

Jaguar Enthusiasts' Club (B.O.P.) Inc.
PO Box 338
KATIKATI 3166

To British Car Club members,



We are looking forward to our 25th Anniversary Celebrations.

The British Car Cavalcade from Mills Reef to The Strand, Tauranga, will be one of the highlights of our **Queen's Birthday weekend** celebrations and your participation will help make this car show successful.

If you are participating in the Cavalcade but not registering to join us in our celebration programme we will require numbers and payment for morning tea at Mills Reef.

The cost will be \$8.50 per person. Please forward payment by **30 April 2013** to:

The Secretary

Jaguar Enthusiasts Club (B.O.P.) Inc.

PO Box 338

KATIKATI 3166

Should you not wish to join us for morning tea but would like to participate in the cavalcade and car show you will be most welcome.

We look forward to hearing from you.

Regards

Carol Pease, Secretary/Treasurer

BRANCH NEWS and EVENTS - Bay of Plenty, continued...

Alvis Car Club Run



Contact: Ron Harvey
07 576 7314
Rob Edwards
07 544 1245



Sunday 26 May 2013

British Cars BOP to visit:

Meet at 514 Cambridge Rd @ 10:45am

1. "Wood Sculpture"
2. Native Furniture
3. Glass Studio

Parking next door at Kids Country car park.

Lunch Break at Bureta Motor Inn

Meal - \$16.00

Or bring your Senior Card - \$14.50

Or if you wish, a Picnic Lunch at Kulim Park *Tauvanga*

Departing 1:15pm to view Tapestry Display at Deidre and Norman Freeman's – 106 Westmorland Street, off Carmichael Road Bethlehem.

Contact: Ron Harvey 07 576 7314
Rob Edwards 07 544 1245

NZ Federation of Motoring Clubs Meeting Christchurch

Notice is given to all members of the upcoming AGM of the New Zealand Motoring Federation Clubs for those in and around Christchurch on 26th May 2013 who may wish to attend.

More details will be provided next month, but this will be a good opportunity to see how the Federation works, and to have some input into the planning and direction of the Federation as it continues to support and guide our hobby to ensure we get the maximum benefit from our vehicles.

Manawatu Branch News:

News Brief from Manawatu:

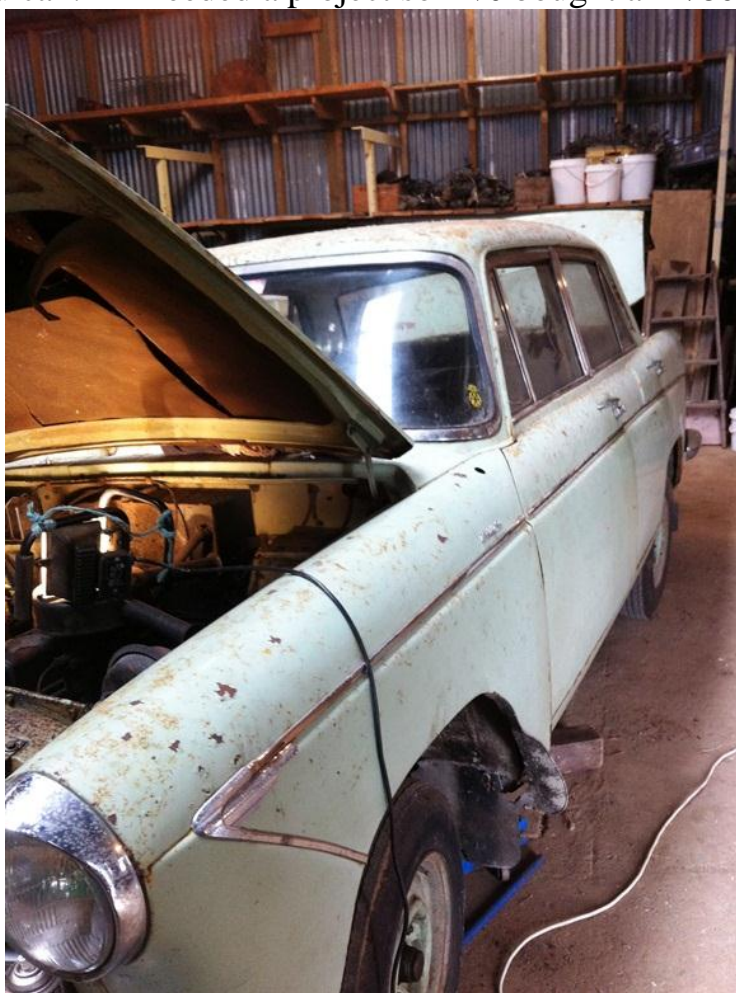
There will be a few new old Wolseleys on the local roads in the near future as mentioned in an earlier newsletter.

Jay Hart from Wanganui has a 6/99 which we hope to see soon, and Pete Cocks has a 15/50 which will soon be road legal and sometime this year will get a paint job and maybe a 1622 motor. The Club has just bought --saved from crusher-- a very tidy 1300. We are not sure what we shall do with it yet, the carb needs servicing and the suspension is flat, it just clears the road and I drove it back from Feilding at a maximum of 25m.p.h. & that was rough !!!!.

A fellow Rileyite whom I have known for years has recently been diagnosed with Motor Neuron disease. While talking to him on our Coromandel Rally he said if there is anything you want to do "do it while you can." I needed a project so I've bought a 24/80 which has been parked in a basement under a house in Auckland for 31 years. The plan is to have the job done by Labour Weekend--this year-- watch this space.

We did not go to Shannon, instead a few of us went to a Vintage Machinery & Vehicle Festival on the Takapau plains, an annual event now which moves around the Lower North Island. It is a huge display of machinery from stationary engines to 20 ton dozers, all in working order some from as far away as Bay of Plenty. The display of stationary engines always had a large crowd watching there would have been over a 100 including a few Wolseleys and most of them ticking over and most with a history of where they were found and what they did. I did not realise that Frederick Wolseley was born in Ireland and once worked for the Austin Company.

Also there, a prominent sign said that "The size of a man's toys is directly proportional to the size of his Wallet ! "



Steve's latest project – a 24/80

Best regards – Steve Finch

BRANCH NEWS and EVENTS - Manawatu Branch



Manawatu member Pete Cocks has just purchased this 15/60 – work is now underway

Manawatu Branch Coming Events:

May 26 Visit to Shannon, Ladies Day, Blokes bring some overalls & tools !! Lunch at Clydesdale Museum. Meet in Shannon 10-30am, by burnt pub

June 30 Visit Studebaker Museum Otaki

July 28 Branch A.G.M. Rangitikei Tavern Bulls. 11-00am (Sharp) followed by lunch.

For more info/ details Ring Michelle or Steve



Photos taken by Ivan McCutcheon at the Vintage Machinery and Vehicle Festival at Takapuna – the big and small of bulldozers (above), and a beautifully restored Wolseley Stationery engine.

Christchurch Branch News:

The month started off with an early rise to get to the Winchester Swap meet at an early hour. I left so early it was still dark when I arrived, and I was one of the first in the gate. This year there seemed to be a few more stalls than previous years, although there was still plenty of room for more. Wandering around, I managed to pick up a couple of gasket sets and some parts reference books for the club, and I did manage to also find a set of new after-market chrome wheel-bands that I'd been looking out for for the Six, which did make it worthwhile travelling down for.

Our next event was our "Lunch-on-the-run" event, which was held on Sunday 7th April. This began at the Belfast Pub, where we had a turn-out of about 8 cars, with a couple more joining us down the road in Woodend. The run took us through the Ohoka area, on to Tuahiwi, and then stopped for a break at the Old Mill complex near the Waikuku Beach turnoff on SH1. Here we visited the recently established antique shop and gallery, and Bains Motorhouse – a classic car sales showroom which also stocks a bit of motorabilia. Owned by a family member of the owners of the former Fazzaz shop that was a must for motoring enthusiasts in Christchurch before the earthquakes, this new 'shop' is a mini-Fazzaz, and with plans for expansion already afoot, it will be a place to visit often if travelling north of Christchurch. On display is a Fiat 850 Coupe that was actually in storage in the rear part of the original Fazzaz shop at the time of the February earthquake. A brick wall and roof beams had fallen across it, and it was left there for 6 months exposed to the elements before it was finally plucked out by a digger and returned to the family. It was a genuine one-lady-owner low-mileage and original car, but now it is very crooked and sad looking. It is a fitting reminder of what the business and many car enthusiasts in Christchurch have gone through, and a great topic of conversation with many of the visitors to the complex. We will be returning there again on Sunday 26th May for the launch of the 100 Years of Morris book launch (see coming events for all the details).

After a good look around the complex, we travelled the short distance back down SH1 to Woodend, doing a drive –through of Pegasus township on the way. It was amazing to see how many new homes have been built and are being built in the township since we last did a drive-through about 6 months ago. In Woodend we all met again at Murphy's restaurant for a great lunch. It was great to catch up with Richard and Elizabeth Smith and Robert and Isobel Kenmare who we haven't seen for a while, and great too that Joe and Judy Barker, and Errol and Jennifer Stewart travelled up from Ashburton to join us.

The other event for the month was the trip down to a private farm property near Ashburton for the Wheat and Wheels Rally that was held in perfect weather on the weekend of 13th and 14th April. We visited on Sunday 14th, leaving home at about 9am. Jenny and I took the Six, and we were followed down by Matthew in his 1100, and Simon Verkerk in the club 1300. On arrival at the event (after passing a convoy of about 50 tractors out for a run on the back-roads), we were ushered into the display car park, where Peter Gallagher and Errol and Jennifer Stewart were already parked and waiting for us. Soon after, we were

BRANCH NEWS and EVENTS - Christchurch Branch

joined by Kevin Boyd in his 6/90, and then Eddie and Nancy Bishop in their white 24/80. We put the club shelter up, and settled in for a great day of static and mobile displays. This event was a one-off, organised to celebrate 30 years of the Ashburton Vintage Machinery Club, and it attracted tractors, trucks, traction engines, vintage machinery and vintage and classic cars from all over Canterbury. It was well patronised by the public as well, with several thousand people visiting during the course of the weekend.

I was particularly impressed by the display of trucks (probably around 100 of all types and sizes on display), and by the huge number of tractors from the very oldest to the newest, smallest to largest, on display and even working out in the improvised show ring. It was an excellent event – particularly well organised and held on a perfect early-Autumn day. I was glad we made the effort to go.



Our cars at the Wheat and Wheels Rally, near Ashburton. Out of shot is Peter Gallagher's 6/110

This month has also seen the groundwork carried out for the next National Rally, and you will see later in the magazine some information about that. Joe and Judy Barker have drafted out a great programme of runs, and Allan Francis has also managed to finalise and book a venue that can accommodate everyone both for accommodation and for the functions that we plan on running. Next month we will put the official registration form together, and it will be available electronically and published in the next Word. It will be a great event, and we are sure we can turn on the highlights of the Ashburton District and beyond for not only local members, but for those who travel from other parts of the country or from overseas.

Since the last newsletter many have asked how Betty Francis is getting on following her admission to hospital in a somewhat concerning condition at the beginning of April. The latest report from Allan is that she is doing well physically, but has memory problems which the hospital think may be attributable to an infection and the drugs she is on following her admission to hospital. At the moment it is a waiting game, so in the meantime our thoughts are with her and Allan, and we remain hopeful that she will soon be well enough to return home.

BRANCH NEWS and EVENTS - Christchurch Branch

Two newsletters ago there was a very nice white Wolseley 1100 advertised in the newsletter by Vic Morrison (from the Jowett Club), who was selling it to give him more time to concentrate on his Jowetts. This car was bought by Anthony Dacre, who pleased with his purchase and is now using it regularly. Anthony bought it out to Idlewood at our last working bee, and Vic also came along to the Jowett Club working bee on the same day, so the two of them got together to catch up and check all was well. Vic then confessed that he'd seen the 'Wolseley' Traveller advertised in the last newsletter and couldn't help himself, so he's now bought that off Alex Sutton all the way up in Waihi, and it's now on its way down to Christchurch on a truck. Apparently Vic and Maureen owned a Morris Traveller years ago and found it a particularly useful vehicle, so with Alex's project now for sale the temptation of owning something very different proved too much. The car is essentially a Morris Traveller which has had the nose of a Wolseley 1100 grafted onto it – Alex has got it to the point where it is a running car, but it needs finishing off and then will have to be re-registered. If anyone can do this, Vic can, and hopefully we'll see it come in the Idlewood gates some time in the next few months.

While talking of Idlewood, we recently received a generous donation of \$500 from the Auckland Branch to put towards into the Spares fund, which is really appreciated. This will be spent improving stock levels of rubber parts which seem to be a high demand item at the moment. Incidentally, Ray is expecting a busier than normal year this year, as people prepare and finish cars in order to make it to the next National Rally. Should be a fun year!

Colin

Christchurch Branch Coming Activities:

Saturday 4th May - Ashburton Swap Meet and Combined Morris rally, VCC grounds, Moronan Road, Tinwald

Be there for the Swap Meet VERY early! At 12.00pm we will meet in the Plains Museum car park (300m on the Tinwald side of the VCC grounds) with Morris Club members. The Plains museum has an open day running, so we will have lunch there (bring a picnic lunch with you), and possibly also visit a local classic car collection in the early afternoon.

Sunday 5th May - Ashburton Rotary Annual Vintage and Classic Rally.

This is not an official club event, but some may wish to take part in this event. Meeting point this year is the Ashburton Airport on Seafield Road – arrive there between 9.30 and 10.00am. Bring your lunch, or buy it at the finish of the run. Entry Fee this year is \$25 per car, and the run finishes in the Lauriston area about 20km north-west of Ashburton.

Saturday 11th May - Working Bee at Idlewood

Arrive any time after 9.00am – come to help, buy parts, or just chill out over a cuppa. Morning tea provided.

BRANCH NEWS and EVENTS - Christchurch Branch

Sunday 26th May - Book Launch at Bains Motor House, Waikuku.

Local author David Greenslade is launching his 100 Years of Morris book on Sunday 26th May, 4.00pm at Bains Classic Motor House, Mill house - 1473 Main North Road Waikuku.

Members of our club are invited to attend the book launch. There will be finger food and beverages supplied. The launch is an official event for the 100 years of Morris (Canterbury). With the Morris Owners Club, Canterbury Morris Minor Club, MG Car Club, Mini Club, Morris Eight Tourer Club, Wolseley Car Club and the Canterbury Vintage Car Club, all are invited to the launch. Peter Morrisons 1913 Morris Oxford car will be on display along with other 'BMC' cars. Please arrive any time you like after 3.30pm. (Signed copies of David's book will be available. His book covers both Morris and Wolseley, is well researched and is of 400 A4-pages carrying 800 images. Cost will be about \$119.00).

Saturday 8th June Working Bee at Idlewood

Arrive any time after 9.00am – come to help, buy parts, or just chill out over a cuppa. Morning tea provided.

Sunday 16th June - Afternoon Run to Waddington

We will visit a local historic property. Run will leave from the Yaldhurst Hotel car park at 1.30pm. Please bring afternoon tea, and a donation for the property we are visiting. Final details next month.

Trip to Beaulieu and European Motor Museums – Part 5 by Allan Francis

This morning one of our group had suspected pneumonia and was staying in Dorking until well enough to travel back home to New Zealand. We all felt sorry for him, as there was still so much to enjoy coming up. It was a short drive from our accommodation to the Brooklands Museum. This was one of the highlights of our trip. Most of our group thought this was going to be an event that they did not want to miss, and now, having seen Brooklands, I now



The flight deck of Concorde

Trip to Beaulieu and European Motor Museum – contd

know why. There was so much history here as it was the world's first purpose built race track in 1907. It was started in the 1900's by wealthy land owners Hugh and Ethel Locke King (I have a video of the early days and am sure that the photo showing them outside their house included an early Wolseley). Upon entering the Museum there was a large souvenir shop with a lots of interesting items, many I would like to have added to my collection but space was a problem. On leaving from home, I started with 13kg and with a total of 23kg allowed for the flight home, I had to be careful not to have excess luggage. At the desk we were offered what they call the Concorde experience which was an extra, so I could not miss the opportunity of actually sitting in a Concorde. Our group entered one of the buses that would have transported you to the awaiting plane, we were given our boarding passes and up the gangway we went and into the plane. It was very narrow with 2 seats either side of the aisle, seating for up to 100 passengers. We also went to the flight simulator (one of 2 made) and I was able to video the flight as would be seen by the pilot landing at Heathrow. Twenty Concorde were built, 6 were used for development and training purposes and had flown from 575 to 1282 hours. The other 14 were operated by Air France and British Airways. More than 30 percent of the components were built at Brooklands for the Concorde. Brooklands was one of the first permanent aerodromes in Britain - Vickers and Hawkers also produced thousands of aircraft up to 1986. On display was a Vickers Vimy (a replica) that re-enacted the 1919 Alcock & Browns crossing of the Atlantic. This was piloted by Steve Fossett & Mark Rebholz in 2005. Also in 1919 Ross and Keith Smiths' flight from England to Australia was re-enacted in 1994, and a flight from London to Cape Town in 1920 was again re-enacted in 1999. It was an incredible feat in those early days of flying (model T era). The Vimy was not very aerodynamic - its nose reminds you of the front of a tram. A Hurricane Bomber is being restored there – just how long it will take is unknown as the elderly volunteers took great interest in showing visitors thei project. Many other planes were on display including the Sultan of Oman's VC 10.

After Brooklands 'proper' we set of for a visit to the London Bus Museum. It included life-like horse-drawn buses of about 1890. A display of mostly double-deckers from the early days (when there were no front brakes) up to 1972. Guy, AEC, Leyland and Dennis buses were represented, and also an 'O' Bedford articulated bus, and a few buses that had been converted to breakdown wagons. Then we moved onto the displays of cars. One of the first seen was a 1930's Napier-Railton - a huge car. On inspection, it had large disc rear brakes. On enquiring, it had been converted to discs some time later in its life when it was the fastest car that was capable of being able to test



In the London Bus Museum

Trip to Beaulieu and European Motor Museum – contd



Front end of the Wolseley Moth replica

parachutes. It must have had a lot of use as the seat(leather) was well-worn. A replica Wolseley Moth early racing car was displayed. it was built around one of the original motors, a 10Hp overhead cam of about 1921. The Moth, being very successful, was still taking podiums for many years. Many cars that had raced at Brooklands were on display - too many to describe. Some of the Racing Lockups (garages) were painted with the signwriting of the pre-war era. The clubhouse is still much the same as it was when it was built in 1907. This was for the

exclusive use of members, race officials, and the weighbridge for the cars, and the Press. It boasted a bar, dining room, billiard room, and all the mod cons for the time. Anyone could join the club, that is, if you could afford to! There was a slogan "The Right Crowd and No Crowding". There were Petrol Pagodas (serve stations, as we know them) built in the 1920s to promote their products, each self-contained with a manager, office, store, and forecourt. Many of these were sponsoring race teams, and others hoped to. These were fully restored to their 1920's liveries. As this is a huge complex with many volunteers doing the majority of the work, I hope that Brooklands will be there for all to enjoy for many years to come.

More next Month – Allan.



Michael Kruse with his latest purchase – Bob Signal's 1500 Mk 2. A lovely and slightly 'worked' car that has given Bob years of fun. It will probably be missed by Bob but treasured by Michael.

Trim Question, from Bryan Kelly, Southern Region

Has anyone seen this trim on a 16/60 before? I was given this 16/60 from Blueskin Bay(bottom of Kilmog Hill-Dunedin) and on dismantling found this trim was attached from the inside. Looks factory as the roof/side panel hasn't been lead loaded or filled as per normal. Have found one other in a wrecking yard with same trim attached. (working on getting that one too!). Really only wanted this for tail lights to replace my VERY faded ones. But took whole car minus grille and motor . Motor destined to be put in Wolseley 1500. NOTE tow vehicle..Austin Gypsy....owner used to pull out car for us....Austin still in everyday use! Still need better tail lights.....



National Rally Notice

Wolseley Car Club, New Zealand 2014 National Rally Methven, South Island, February 2014



The Christchurch Branch of the Wolseley Car Club NZ Inc is pleased to confirm that the 2014 New Zealand National Rally will be centred in the idyllic South Island township of Methven, only 90km from Christchurch, nestled in the shadow of the Southern Alps and the Mount Hutt ski resort.

The rally will be held beginning with check-in on Sunday 23rd February 2014, and conclude with a farewell breakfast and send-off on Friday 28th February.

National Rally Notice - continued

A Rally Committee has been established, an accommodation and venue base has been booked, and a draft rally programme put together.

The rally will be based at the Ski Time Lodge, offering great accommodation at off-season rates, and a conference venue suitable for group meals and other activities.

Room rates are as follows:

Three bedroom apartment :	\$330/night
Two bedroom apartment:	\$220/night
One bedroom studios:	\$110/night
Upstairs lodge rooms:	\$100/night
Downstairs lodge rooms:	\$80/night

A complimentary light breakfast (cereal, toast, tea & coffee etc) to all house guests. It won't matter, if they are staying in the apartments, studios or lodge rooms.

Everyone can decide if they would like to take this offer or make their own breakfast.



All rally participants are encouraged to stay at this venue, however a range of accommodation is available elsewhere in the township.

Draft Rally Programme:

Sunday 23rd	Arrival in Methven, check-in and welcome meal
Monday 24th	Run into South Canterbury visiting Geraldine, Pleasant Point, Rangitata, stopping off at museums, a leading taxidermist, and other local attractions.
Tuesday 25th	We explore the Ashburton district – a wide range of attractions to visit, including some alternatives for the women to enjoy.
Wednesday 26th	Trip to Christchurch, including visits to local car collections, the local branch of the Vintage Car Club, and the Wolseley Car Club's own club facilities and spares shed.
Thursday 27th	Run into the breathtakingly spectacular gorges of the Southern Alps, including a homestead visit.
Friday 28th	Farewell breakfast and departure for home.

A limited number of Wolseleys have been offered for loan to overseas participants from Christchurch members – please enquire. Rental cars (moderns) are readily available from Christchurch.

More details and a registration form will be available in June 2013. In the meantime enquiries can be sent to Colin Hey, email c_hey@xnet.co.nz, phone 03 3598737, or Allan Francis, email allan.betty@xtra.co.nz, phone 03 3237559.

Those wishing to book accommodation can do so straight away. The contact details for Ski Time are as follows:

Ski Time Conferences, Apartments & Restaurant
 Mt. Hutt Methven
 Ph 64 3 302 8398, Fax 64 3 302 8394
res@skitime.co.nz,
www.skitime.co.nz

Be sure to mention that you are booking for the Wolseley Car Club National Rally

Buy and Sell

For Sale :

Wolseley 6/80, 1952. Lots of work done including new tyres, window rubbers, recond engine- basically a full restoration. Heaps of spares, selling with '52 680' personalised plate – unfortunately age and health catching up with me. \$12,000 for everything or would part exchange for FWD 18/85 Mk2 with auto & power steer. Contact Alex Sutton, 24 Snell Cres, Waihi Beach, phone 07 863 5435.



For Sale

Twin-carbs to fit a 6/110 – full setup, fully overhauled by Swift Automotive in Christchurch using brand-new parts right through. Have only been used to start the car a couple of times – restoration of the car is now no longer continuing, so the carburettors are for sale. Contact Simon Verkerk, 021 115 4789.

Wanted

Wolseley 18/85 or Wolseley Six – Front Wheel Drive model. Wanted for John Malia in Melbourne. Please contact Michael Kruse, Phone 06-753 9743, or email kruseco@xtra.co.nz

For Sale

BMC B Series 1622 engine that has been reconditioned shortly before being taken out of a J4 camper, due to it being underpowered.

We also have another 1622 engine from a Riley 4/72 that needs rebuilding that is for sale. phone Steve Belcher on 07 5763773

The World



**OFFICIAL NEWSLETTER OF THE
MCSELEY CAR CLUB NEW ZEALAND INC**

If undelivered, please return to:

The National Secretary
Winston Ouel
183 Cecil Road
Wadsworth
Wellington 6012

Registered at Post Office HQ Wellington as a Magazine