

THE WORD

OFFICIAL NEWSLETTER OF THE
WOLSELEY CAR CLUB NEW ZEALAND INC



JANUARY, FEBRUARY, MARCH 2023



During January and February our NZ Club was delighted to host UK Wolseley Register members and friends, Graham & Jenny Ryder. Here they are pictured at the Rangiora RSA Run with Sharon O'Malley in February.

OUR CLUB OBJECTIVES:

- To promote interest in and use of Wolseley vehicles.
- To arrange social functions for the purpose of promoting the objectives of the club.
- To promote and encourage the efficient maintenance of members' vehicles.
- To render technical assistance to members.
- To produce a newsletter regularly as a vehicle for the exchange of owners experience, technical information, the sale and exchange of cars and spare parts, or any other matters of interest to members.
- To maintain a library of information on the history, maintenance, repair and modification of Wolseley cars, to be available to members.
- To maintain a central register and stock of spares which may be established to assist members.



Club website (new one) : www.wolseleycarclub.co.nz

HOW TO CONTACT US:

National President:

Gordon Duthie (Beryl)
13 Maryport Street
Lawrence, Otago 9532
Ph 03 485 9543
email gbduthie@xtra.co.nz

National Secretary:

Michael Kruse (Raewynn)
297 Huatoki Street,
New Plymouth 4310
Phone 027 660 0203(mobile)
email michael.kruse432@gmail.com

Regalia Enquiries:

Dany & Sharon O'Malley
P O Box 75, Leeston 7576
Ph 03 324 4421
Email: dandsomalley@gmail.com

Website Coordinator:

Raewynn Kruse (Michael)
297 Huatoki Street
New Plymouth 4310
Email: raewynnk@gmail.com
Phone 027 2438 565

North Island Branch:

Raewynn Kruse (Michael) P O
297 Huatoki Street
New Plymouth 4310
Email: raewynnk@gmail.com
Ph 027 2438 565

Nelson/Marlborough:

Bryan Stansbury (Gaylene)
113 Whitby Road
Wakefield, Nelson
Phone (03) 541 8255
Email: stansburys@xtra.co.nz

Christchurch:

Temporarily Vacant
(Can anyone help?)

Southern Region:

Fergus Sime (Mary Jane)
445 East Taieri-Allanton Rd
RD 2, Mosgiel 9092
Ph 03 4534008, 0274048468
email fergus.sime@xtra.co.nz

Spare Parts Enquiries:

If unable to be handled by your local
Branch, contact: Jonathan Gaut (Christine)
414 Breezes Road, Aranui,
Christchurch 8061.
Phone 027 235 9566
Email: wolseley.spares.nz@gmail.com

All Newsletter Enquiries:

Send to: Colin Hey (Jenny)
34 Rossington Drive
West Melton 7618
Phone (03) 359 8737 or 021 883 807
email: heywolseley699@gmail.com

Disclaimer: The views and opinions in this publication are personal to the authors, and not necessarily the official views of the Wolseley Car Club of NZ Inc.

EDITOR'S STUFF

Despite the Christmas break a lot has happened in the three months since the last Wolseley Word.

Over Christmas I spent a bit of time completing some work on our 1912 Wolseley. It hadn't been out since the end of last summer and we wanted to take it to the Dunedin to Brighton run this year, as there's just enough room to fit myself, Jenny and Matthew across the front seat in this car which means we can all go on the run together. It was time to get things finished and back together again, so this was done early in the New Year

and the car cleaned up and made ready to go. In the meantime a good friend of mine and fellow veteran enthusiast Malcolm McGibbon had been working on his recently acquired 1914 Model T roadster trying to sort out a hot starting problem, and finally thought he had it sorted. He and his wife Anita were planning on taking that to Dunedin as well, so we decided an outing was in order to test that both cars were sorted.

Jenny and I drove out to Darfield to meet them there, and together we motored out to Whitecliffs for a stop-off at the campground there, returning to Glentunnel for lunch at the golf club café. We had a very good day out, and both cars performed well over the 60 miles and were deemed fit to go in the trailers ready for the trip to Dunedin.

During January Wolseley Register members Graham and Jenny Ryder arrived after a long journey from the UK. They were last here about 6 years ago and were keen to take in a



This may be why the newsletter is late?? Taken after a hard day's motoring in Invercargill recently

number of events in NZ while they were here and didn't get a chance to do on their last visit, such as the Dunedin to Brighton run, and the Art Deco event in Napier. I met them at the airport in the Wolseley Six, and we soon had all their luggage on board and took them home to stay with us for the 3 days until they left for Dunedin with us on the Friday morning. They made good use of these days by getting over their jet-lag, and then joining us on a run which began at Idlewood, and then went to see the car collection belonging to local VCC member Roy Grainger in Halswell. This was followed by a picnic at Tai Tapu domain. Graham and Jenny are



Picking up Graham & Jenny Ryder from the airport

Wolseley 1500 enthusiasts so Graham drove our Mk1 1500 on the run. It was a nice day and we had a good turnout of members, so it was a very successful outing. The following

day they went into Central Christchurch to see what the progress on the earthquake rebuild had been like since their last visit, and to take in a few of the local attractions.

On the Friday morning we loaded up the 12/16 in the trailer and left for Dunedin, with Graham and Jenny following in Jenny (Hey's) Toyota Corolla. After the Dunedin to Brighton they were to carry on and do a circuit of the South Island while Jenny and I had a holiday of our own doing a 4WD trip from Blenheim to Wanaka.

This year's Dunedin to Brighton was probably the best of the six that we've been to so far. Three of us from Canterbury attended – our friends Malcolm & Anita McGibbon with their Model T Ford and ourselves, and another couple (Allan Famlton and Lesley Colsell) also took their Stanley Steam car down there. The weather was ideal on the day of the run – overcast and a bit cool, but not cold. After meeting at the First Church just out of the

Octagon (where John MacAdam was directing parking operations) we had a few minutes to get into the right order for the run and to receive the mandatory briefing from our very own Colin Winter. We then made our way around and into the Octagon at 10am for the public display until the 11am start. As usual a large crowd had gathered, and while the display was on we retreated to a café to steady the nerves



Three-up, leaving the Dunedin Octagon

for the run ahead of us. I always find waiting for the run to be a mix of excitement and nervousness – the climb out of Dunedin is always a long low-gear challenge, and with hundreds of onlookers, a breakdown is the last thing anyone would want. We also caught up with Gavin and Wendy Turner and George and Pauline Strong in the Octagon – really good to see them there and to talk to them for a few minutes.

We were flagged away by one of DCC's enthusiastic counsellors, and soon in low gear for the climb over the hill and then on our way out to Brighton. Once down the other side of the hill the 12/16 is fun to drive along Kaikori Valley Road which is a 3km, clear, slightly downhill run where the car can easily maintain 50km/h and keep up with the traffic.

Spectators were positioned and out waving all along the route, including Fergus and Mary-Jane Syme, and even a group just short of the finish offering food and drinks on the side of the road in return for photos and chance to say hello. There were 33 cars and one motorcycle taking part this year, and all of them successfully completed the run without assistance.

Once in the domain the field tests were completed, and then we could relax and enjoy the supplied picnic lunches. A lot of owners took the opportunity to let others ride in or even drive their cars around the large domain – a huge 1915 American La France roadster belonging to Craig Marshall proving to be very popular (it won the People's Choice award

this year). Visitors in the afternoon included fellow Wolseley Club members Kevin Casey and Trevor Johnson who I hadn't seen since the National Rally.

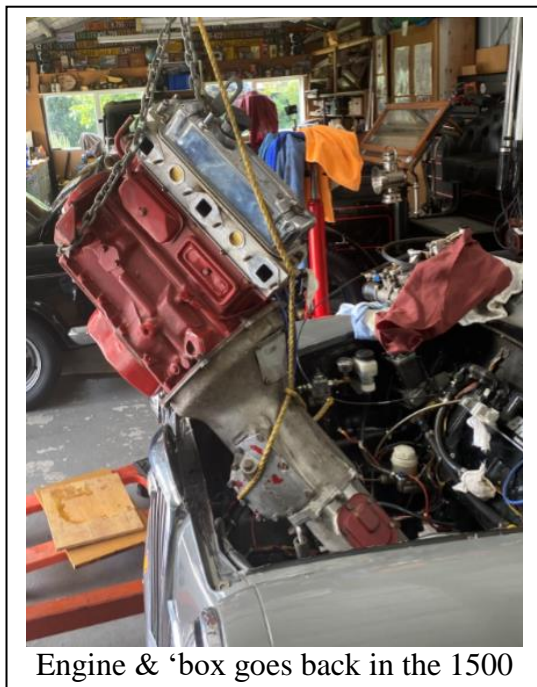
By 3pm the wind had turned to the south, so everyone was soon back in the cars and heading back to Dunedin, assisted home by the tail wind (and it does make a difference!). That night we had a very pleasant dinner and prizegiving function at the Otago Golf Club. As much as we enjoy the Brighton run itself, we also really enjoy the outing the following day – always a run out to Port Chalmers and lunch at the Carey's Bay hotel. Around half of the entrant's also take up this option, and it's always a great opportunity to not only enjoy the drive around the harbour in the cars, but also to socialise together. If the weather is fine (it happened to be sunny and calm this year) it's hard to beat this part of the weekend. Graham and Jenny Ryder came with us this year, and after the lunch we took the cars back to the motel, and then visited a few of the tourist spots around Dunedin before visiting John and Rosie MacAdam that evening, where they made us all really welcome. All up a great weekend away.

After a week at home, Jenny and I then headed for Blenheim in our Ford Ranger to spend a week on a 4WD trip. This adventure took us through the centre of the South Island on back-country roads and farm tracks, eventually finishing in Cadrona. Most days would see us climb on a track up to at least 5000 feet, and we saw some amazing views and parts of the country unreachable in a normal car. We were assured that there was little risk of damaging the vehicle if normal care was taken, and this was indeed the case, although there were a few bashes on the protective shields under the Ranger. I was amazed at the ease that all of the cars (mostly twin-cab utes) could climb into and out of streams and up rocky and muddy slopes. In 4WD low-range there was nothing that really challenged them – the driver was a different story. Sometimes I dared not look over the edge of the track as it was a long way down!! There were 10 vehicles on the tour, and all made it through to the end with the worst mishap being one ruined tyre. Everyone was around our age and we all had a ball together. Our guide for the week was an ex-shearer and high country farmer, and knew every station and owner, and every track and hidden obstacle on the track like the back of his hand. If anyone is keen on doing the trip, just google 'High Country Journeys'. I'd highly recommend them – hire a vehicle if you need to.

We got back home on 5th February, about one hour ahead of Graham and Jenny Ryder, who stayed with us one more night before heading to the airport to fly to Auckland to see Paul and Noeline Billing. Before taking them to the airport, we sneaked in the Rangiora RSA Waitangi Day run to Loburn Domain in the 6/99. There were about 80 cars and a number of tractors on that event, so it was a good last hurrah for them before taking on the North Island. Jenny has sent me a write-up of their trip in the SI which you will find later in the newsletter, with the NI leg to follow in the next issue.

The next couple of days were spent re-installing the engine and gearbox in the Wolseley 1500 race car so I could take it down to the Hydraulinks Classic meeting at Timaru's Levels circuit the following weekend – a good event with 5 races for the VCC class which all went well, except when the track got very greasy after a very light shower. There seemed to be a lot of attrition during the weekend with a number of cars from all classes breaking something, and a few damaged in relatively minor prangs. As they say, if you can

drive the car back onto the trailer with no damage at the end of the weekend, it was a good meeting!



Engine & 'box goes back in the 1500

Just for a change, the following weekend we were back in the 12-16 Wolseley again, this time at a weekend veteran rally in Geraldine. There were 20 cars on this one, and we had a great weekend travelling around the Geraldine and Pleasant Point areas and socialising with other Veteran Car Club members. Colin and Judy Winter were also on this run with the 1900 Wolseley 'Grandma'. The weather was perfect, and we did about 100km over the weekend driving in shorts and tee-shirts. I forgot to mention too that I did go through with retirement right before Christmas as planned, however my last week at work included 4 days working from home because I picked up COVID on my final trip to the West Coast the week before – I think it was their going away present! Fortunately I had nothing more than similar symptoms to a bad

cold. My last day in the office was Friday 23rd December and I had absolutely no problem walking out the door for the last time, leaving all the stresses and problems of the job behind me. Life has been busy but very enjoyable since then – more veteran and classic motoring and motor racing, lots of jobs that have been waiting around home, and lots of time spent helping out with club spares.

Cheers everyone, Colin

Deadline for next Wolseley Word:

Friday 19th May 2023

Wolseley Super-Six



If anyone has a spare 20 minutes, this is a very good U-Tube video to watch.

Here is the link:

<https://youtu.be/xkoqCLK8bWo>

There is also one in the same series on a 1948 Wolseley 10HP.

CHAIRMAN'S REPORT

Hi Members,

The New Year is well and truly underway now and I am back in the National Chair again. Colleen Lichfield took the chair October 2021 and for twelve months did a great job. It was timely for her to come in and with her ability to put into place procedures to produce outcomes has assisted the executive to another level. This always flows into the club in a positive way. I thank her for her commitment and time and realise along with the other members of the Executive in accepting her resignation because of private commitments that had arisen.

The National AGM was held in Wellington and was well attended with all other positions at a national level staying as is. These AGM's have always been positive with delegates coming forward in support. Anthony Billing is now looking after Face Book, and Murray & Sue Bethell now reside in Nelson and are motivated to contribute to that branch. The parts departments North and South are always creating improvements in particular most recently safety features within and around their sheds. Graeme & Kirsty Lee are wishing to take on running the 2024 National Rally. Other branches coming up with interesting over night and day runs and we must also note Sharon and Danny with regalia promotions. I have highlighted only a few of many who continue to put a lot of time and effort into the club for yours and our benefit.

Please support and assist where you can.

As far as Beryl and I are concerned, we have been out a few times in particular attending the South Otago VCC 50th Annual Rally which resulted in a photo of our car in the local paper, and once again with the Oxford CI Caravan attached promoting the Lawrence Car Club three-day event.

My water treatment business has been particularly busy this year which has interfered with free time, I'm going to have to sort that out!



The Duthie's 6/110 Mk2 still regularly doing caravan duties

CHAIRMAN'S REPORT - continued

The national rally was some time ago now and my report on it was in the last Wolseley Word. At no fault of anyone, the Rally Winner's Trophy wasn't on hand to present to the Rally Winner, so I had the pleasure to present it to Derek and Lee Brehaut when we met up with them in Timaru on 2nd February.

All the best for the rest of the season's motoring in the South, and hope there is a bit left for you in the far north.

Good Motoring

Gordon Duthie

Right – Derek & Lee Brehaut with the Overall Winner's trophy for the 2022 National Rally



West Coast National Rally 2022 - Prize List

In the last Wolseley Word I forgot to include the list of winners from the West Coast National Rally last year. My apologies - here is the list:

Longest Distance Travelled: Ray & Caryl Chappell, Wolseley 6/110 Mk2

Concours (Pride of Ownership) Trophy: Derek & Lee Brehaut, Wolseley 6/90 S3

Most Original Car – Ian Scott, Wolseley 6/110 Mk2

Most Enthusiastic Participant's Trophy – Murray & Sue Bethell, Wolseley Hornet Mk3 (*note, they travelled from Nelson, started and finished in Christchurch and completed the whole rally in the Hornet*)

Good Samaritan Award – Hugh Mackenzie (he repaired our tour bus on Day 2)

Entrant's Choice Award 1st – Derek & Lee Brehaut, Wolseley 6/90 Series 3.

2nd – Gordon & Beryl Duthie, Wolseley 6/110Mk2

3rd – Murray & Sue Bethell, Wolseley Hornet Mk3

Hard Luck Award – Trevor & Dot Johnson, Wolseley 6/110 Mk2 – wipers failed – not ideal on the West Coast!

Overall Winners – Derek & Lee Brehaut, Wolseley 6/90 Series 3.

Runner-up Overall – Murray & Sue Bethell, Wolseley Hornet Mk3

Congratulations to you all.

SECRETARY'S REPORT

Hi Wolseleyites,

Summer has been fine with a nice Christmas day here in Taranaki. With family we had a quiet lunch with the entertainment provided by the Twins opening their presents. I attended three 'Twenty/20 Over' matches at Pukekura Park, which were all played in fine weather.

Now to the Wolseley Car Club. I have been busy with new membership - we had 7 new members from the North Island and one from Southern, all in the Holiday break. Welcome to the Club if you are one of them – if there is anything you need or can offer, please don't hesitate to be in touch with your local branch representatives.



The Executive Committee has also been working on a **Business Plan, from the feedback from the questionnaire we sent out last year. Here is the Summary:**

What	Whom & How	When
1. Publicity material, leaflets, and the like to be available at car shows, and other relevant places around the country such as Information centres, libraries etc.	Raewynn worked on this in January. Went to printer for pricing, Working on an old pamphlet that Colin put together going to add new photos and update. Sue asked about how are we going to distribute the pamphlets. (It hadn't been decided yet) Michael offered to distribute the pamphlets	28 th February
2. To attend existing car shows and displays and advertise Wolseley's to others, using promotional material.	Michael organised 3 Flags One still to be Distributed to Northern Area (Ans Schoenmaekers) There was some discussion on this and Southern wanted 2 flags and Nelson/ Marlborough 1 flag Branches to pay for flags Michael to organise.	28 th February
3. Benefits to younger people will include the mechanical expertise within the club. With less and less mechanics and more and more mechanical technicians, this knowledge will become extremely valuable.	(A) After discussion, Technical Advisors were appointed A & B Series , Michael Kruse C Series Colin Hey, E Series Stephen Belcher There can be more people be added as Advisors as necessary. Also, we need a 4/50,6/80 advisor (O/H cam) perhaps Ivan McCutcheon ?? And a pre war/vintage Advisor to be discussed at next meeting. (B) Technical Information Needs to be collated and stored so all members can use it. More thought needs to be put into this. (Colin told us the Hornet club have put out a book (from information held in the club magazines) on all technical information on the Hornet)	30 th April

	<p>Sue offered to go through all the old Words on the Website and take out the Technical Information and send it via Email to Colin to Collate over the next 12 months.</p> <p>(C)</p> <p>A list of Garages willing to work on Wolseleys and Competent to do so. Gordon suggested that Michael to keep a File on Garages and to distribute by Wolseley Word and website, Anyone who has had good service in their area please send information to Michael . Local Branches could keep this information current.(there could be scope to get some sponsorship from garages that did some of our work.)</p>	
<p>Improve use of technology. It is critical for the Executive to understand the website and Facebook and how it can contribute to the club's life and vitality.</p>	<p>There was no person at the meeting willing to make this a goal for them.</p> <p>Gordon to discuss this with Anthony Billing</p>	<p>On Going</p> <p>30th April</p>
<p>5. An article in the Beaded Wheels about our club and advertise parts sheds in both North and South Islands. Run the Avert for 3 months in Beaded Wheels</p>	<p>Colin</p>	<p>30th April</p>
<p>6. Executive to look at how National events can be more affordable and approachable for our members.</p>	<p>Michael thought the status quo for the National Rally was fine. A small thing to reduce cost is that we could Itemize the meals on the program and pay for each meal . This does have a downside as the Rally members are split up at mealtimes.</p> <p>Colin thought there was some merit in Combining the Rally every Second year with the National AGM. But they would have to be keep separate IE have the AGM on the Saturday and the Rally start on the Sunday. Winton brought up payment to attend the AGM . If the person was going to the AGM only payment, then was OK but not if combing with Rally. We will have to work on the detail if we decide to do this.</p> <p>Group Booking get good discounts.</p> <p>Sue thought Petrol Vouchers to be given out at the start of a National Rally \$100.00 as an incentive to get people to come. This was seen as supporting those who put in the effort to go to the Rally.</p> <p>Also, a free meal at prize giving was discussed. Nick thought petrol Vouchers were good as you could give them out on Day 1 or 2. Get the people on the Rally</p>	<p>On Going</p>

	then reward them for going. Ferry Discounts were discussed about 10% Make this decision closer to the Rally to be left on the agenda.	
7. Have one or two professional publicity/promotional kits available for branches to be able to use at events.	Raewynn has been looking at this and She will work on this in March 2023	On Going

Now, just to complete my report, I recently have purchased a 6/90, so I really need to now get more of our cars mobile as my modern is now outside the basement in the drive.



Happy Wolseleying
Michael Kruse



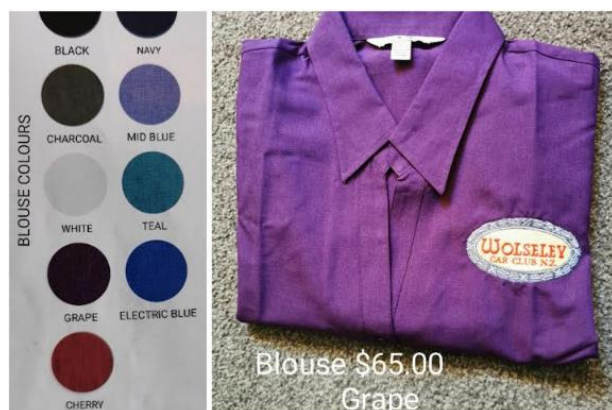
Ray Willoughby is offering his very nice Wolseley 15/50 for sale, so if anyone is interested in purchasing it, please get in touch with him. It's been in the Wolseley Car Club for around 30 years and is a good running example in very presentable condition. Ray can be contacted on 03 352 9016.

REGALIA SALES

For any Wolseley Car Club regalia (caps, shirts, badges, books etc), and for any Wolseley-related books or technical information, please contact Danny or Sharon O'Malley on 03 3244421 or 021 498 162 phone or text.

Sharon can also provide copies of handbooks, workshop manuals, and parts books for most Wolseley models, either to loan or photocopies. Some general information Wolseley-related books are also available to loan – please just ask her or email orders to:

dandsomalley@gmail.com , with Name and size please. Now in stock:

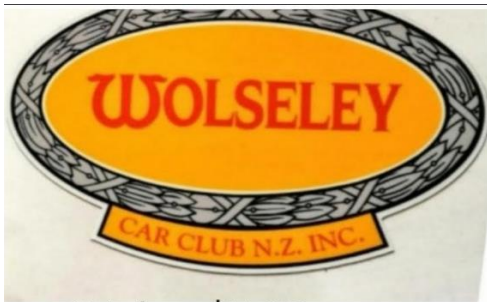


Note price increases – Bucket hats now \$22.00, Woollen Beanies now \$25.00

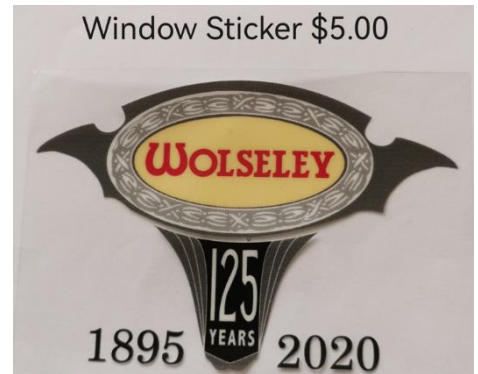


REGALIA SALES - continued

Polycotton Overalls with club motif - \$95



Sticker \$5.00



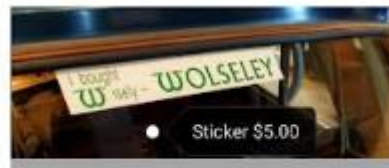
Window Sticker \$5.00



Grille Badge \$40.00



Wolseley Car Club My Other Car.. Window Sticker \$5



Wolseley Car Club I Bought Wisely Sticker \$5

BRANCH NEWS and EVENTS – North Island Region

North Island Region

This summer has seen us out in our Wolseley at several events, Wolseley and VCC. In January we spent the weekend in Wanganui for their Burma Rally we met up with Winton and Ruth and had a great weekend. Only a couple of domestics in the car when trying to get Michael to slow down for the time sections. The Inglewood Car show was postponed in January due to the rough weather and is now in March unfortunately we had already committed ourselves to help at the Vintage Machinery event on the same day in Hawera. End of this month we will take part in the 50th year of the mini vin rally in Waitara this will be a great day with plenty planned. At the end of March 17 NI Wolseley Car Club members will be heading for the Forgotten World out of Taranaki along the rail tracks in Golf Carts this will be a great experience and people are looking forward to it. Thank you to Janice and Steve and Larry and Winton for organising the end of year Christmas functions for our members they were both well attended and everybody had an enjoyable time.

Working Bees are going well, the last one was well attended with a very successful day had by all.

We had the pleasure of hosting the Ryders this week with Michael taking them to places of interest in our beautiful district. I unfortunately had to work but spent a lovely evening

BRANCH NEWS and EVENTS – North Island Region, continued

with Jenny and Graham. In May we plan to go over to the Gold Coast it is our grandsons second birthday, our trip is timely as the same month is the Australian National Wolseley Rally in Wagga Wagga, we decided to add this on to our visit before coming home. For further info on this contact John Gray wolseley680@bigpond.com.

When mum went into a rest home a few months ago Michael and I were tasked with the job of caring for all our family history documents pictures, books etc. Mum had done a great job of itemising and putting all the info into books. However something of interest my Dad had a Baby Austin (this was some years ago) to which he brought for 30 pound. Mum said that if it rained you had to put an umbrella up inside the car. He had the car for



Dad's Baby Austin

Regards Raewynn.

six years and apparently set several speed records! He then sold it on for 30 pounds. I can imagine my Dad speeding up the highway in his baby Austin.

I would like to express our best hopes to all our Auckland and East Coast members caught up in the aftermath of Cyclone Gabrielle - we are thinking of you all.

North Island Region Coming Events:

Sunday 23rd April 2023 - Ellerslie Inter-Marque Concours

Inter-Marque Concours and Classic Car Show at Ellerslie Racecourse from 10a.m. to 4p.m. Cars need to be in place by 9a.m. The theme is "World of Wheels".

We have space for 6 cars in total. If you would like to display your Wolseley, please contact Noeline Billing on 0274 531 049. A map of the area with directions and any other information you require is available on the event website: <https://www.concours.org.nz/>

Christchurch Branch News and Events

It would be fair to say that our Branch has been going through a bit of a lull period lately, mainly due to some of our members having to deal with health issues.

For those of you who read each page carefully, you may have noticed in the committee list inside the front cover that we are currently without a Secretary, as Stuart Penny has had to step aside to care full time for his wife Judith who is not at all well and has now moved into a rest home. Stuart sent out an email to this effect to all of our Branch members, asking if there was anyone who could fill his role for as long as it takes, but this has still to happen. The main role of Branch Secretary is just to record and file the minutes from the committee meetings, and then just send out reminder notices by group email to let everyone know and remind members what events are coming up, and then just keep the Branch membership list up to date with help from Pat Boyle.

If there is anyone out there who could do that to at least keep us going until our next AGM in July, then please have a chat with Nick Stevenson, Pat Boyle or myself.

Also struggling a bit at the moment are Eddie Bishop who's as willing as ever but his knees won't keep pace, Graham Quate who is dealing with a kidney stone issue as our great new hospital system struggles to find theatre time to get it sorted for him, and Ray and Wendy Willoughby, who like Eddie, are finding active mobility are more and more challenging.

Serious as these issues are, sadly this month we lost our long-time and faithful Branch member Cecily Shanks, who passed away suddenly after a spell in hospital and then a day or so after she moved into a rest home. This of course was a severe blow to Tony Shanks, who like Eddie and Stuart, also is one of our mainstay mid-week and working bee crew. We all gathered for Cecily's funeral at Lamb and Hayward and bid her farewell two weeks ago. To Tony we all wish you our sincere condolences, and most of all, to him and others (especially Stuart and Judith) our ongoing support. If there is anything any of you need, please just ask.



Cecily at a club meal a couple of years ago.

On top of this, Jonathan Gaut (our Spares Coordinator) has returned to full time work as his mechanical skills were desperately needed at a business he has worked at in the past, so I am helping in the spares role again. Fortunately I've got a bit more time to do this now I've retired.

Henceforth our events list has been in disarray lately, although at our committee meeting last weekend we spent some time planning out some activities, as you will see in the list below. Some events are our own, some will be combined with other one-make clubs to make organising them more worthwhile, and some are our regular annual events managed by various community groups which are always well worth attending. All we can ask is

that our membership support them – the more we get to them the more enjoyable they are for everyone.

On top of that, our monthly working bees will continue on the second Saturday morning of every month, which of course is also when our branch committee meetings happen which anyone is welcome to attend. Remember, morning tea is always provided and it doesn't matter why you come, we'd just be happy to see you.

However, despite all of this, I'm pleased to report we've still managed to attend a few events. On New Year's Day we attended the ever-more-popular New Year Picnic at the Little River Domain which is organised by the Banks Peninsula Branch of the VCC. Probably about 300 cars and a few motorcycles and light trucks turned up, the weather was good and we had a good day there.

Also in January we hosted Graham and Jenny Ryder from the Wolseley Register in the



Picnic at Tai Tapu Domain

UK, so we organised a special but simple outing in January for them which attracted 10 cars on a beautiful summer's day. We met at Idlewood for a quick morning tea, then we travelled out to Halswell to visit a collection of classic cars, trucks (and even a restored 1960's caravan) owned by VCC members Roy and Shirley Grainger. Roy has a beautifully restored Diamond T truck, and amongst other cars, a collection of Ford Mustangs in their own special garage. After

about an hour there we carried on to Tai Tapu domain where we enjoyed a picnic lunch together.

Next up was the Rangiora RSA run on Waitangi Day – not a great attendance but a good outing just the same. It's a well organised event which also includes a run for tractors. This was the last day the Ryders were with us, and they came on the run with us and then were whisked off to the airport at lunchtime to relocate to Auckland where they were to meet up with the Billings and then travel south to see Michael and Raewynn Kruse and Winton and Ruth Cleal and take part in some NI activities.

In March the annual Twin Rivers Vehicle Extravaganza was held at the Christchurch A&P Showgrounds and this year it was a huge event. The fine weather brought out well over 800 vehicles (mostly cars of course), and walking around them all and looking at the more interesting ones was a bit challenging due to the sheer number on display. Luckily we had pre-booked a display area so we didn't end up spread throughout the grounds, and eight Wolseleys turned up. The club shelter and banners were erected and we had somewhere to gather and chat which was really nice. It was particularly good to have the newly restored Wolseley 1300 arrive being driven on its first official club outing by Tara and Blue Gallagher. Whilst it has been finished a few months now, there have been a couple of

BRANCH NEWS and EVENTS – Christchurch Branch, continued

teething issues to resolve and it's also been difficult to fit Club outings in with their busy schedule. After the event a few of us called in at the Islington Tavern for a chat on the way home which was really good.



Assembled for the run to Twin Rivers – Tara & Blue Gallagher's immaculate 1300 on left.

Coming up we have a few good outings planned – details are in the coming events section below, so please mark the dates in your calendar or phone now so you don't forget. We'll try and get an email notice out to everyone in the week leading up to each event just to remind you. As I've said above, all we can ask is that our members support our events – the more we get to them the more enjoyable they are for everyone. Cheers, Colin Hey.

Christchurch Branch Coming Events:

Sunday 16th April – Old Cars, Bikes and Coffee at the VCC Grounds, McLeans Island. Give your car a run, have a coffee and meet and chat to fellow vintage and classic motoring enthusiasts. Any time from 9.00am, finishes by 11.30am.

Anzac Day – Tuesday 25th April: Auto Restorations Malvern Run

MALVERN RUN

Anzac Day – Tuesday 25th April 2023



Sponsored by Auto Restorations Ltd



Kindly sponsored by Auto Restorations Christchurch, and organised by the VCC, a great way to commemorate and enjoy Anzac Day in your classic vehicle.

The assembly point is 10.00am at the Darfield Recreation Centre in North Terrace, Darfield, where your rally pack

and instructions will be available. The route travels on secondary roads (no shingle, easy motoring) through the Malvern District and passes the War Memorials of Darfield,

BRANCH NEWS and EVENTS – Christchurch Branch, continued

Sheffield, Hororata, Glen Roy and Glentunnel. Feel free to stop and pay your respects with a poppy at each Cenotaph. Distance is approx 50 miles (80ks) from the start back to Darfield. Lunch stop will be at the Glentunnel Community Centre.

The featured vehicles are those built during the war years, but any pre-1992 vehicle is welcome to join in, so any Wolseley is eligible to participate. There is plenty of parking available at the start.

Lunch this year will again be supplied by the famous Darfield Bakery and your order will be available at the start. You can bring your own picnic lunch though if you wish.

Come and join us on what is a very special day, remembering those that made the ultimate sacrifice and doing it in cars and on motorcycles that they would recognise.

For more information contact Colin Hey 021 883 807

Note: Pre-registration is essential for this event – please contact Colin Hey no later than Sunday 16th April if you would like to take part,



Sunday 30th April



**Ashburton Plains Rotary
Classic Car Run**



We invite you to our 30th Annual Ashburton Plains Rotary Club's Classic, Vintage and Veteran Car Run, to be held on Sunday the 30th April 2023 in conjunction with Ashburton Wheels Week. The end venue this year will be "Peel Forest Estate".

You will have the usual opportunity to have a picnic lunch following the car run (please bring this with you), talk to other car enthusiasts and view the vehicles assembled prior to the prizes for each category being presented.

Registration will be held at the Ashburton Showgrounds, which are located at the northern end of town behind the John Deere agency between 9 and 10:15 a.m. The Showgrounds entrance will be signposted from the John Deere agency.

The cost is \$20 per car and this includes a personalized certificate, morning tea at the Showgrounds and entry for car and passengers into the venue. Note, there is no EFTPOS facility available, so please bring cash with you.

The "Extra Interest" display of vehicles this year will be "BMC Mini/1100/1300/1800 Cars" Owners of these vehicles are being invited to park them together in an area set aside and "show them off" - talk to others about them, have information - photos of restoration etc. for a period 11.30am to 1pm.

Continued on next page

BRANCH NEWS and EVENTS – Christchurch Branch, continued

Each entry to our Car Run will have one vote that they can use for their choice of best car. There will be prizes awarded for various other vehicle groups by appointed judges. Funds raised will be donated to the “Peel Forest Play Group”.

If you have any queries, please phone / email the Convenors who will be only too happy to help.

In order to simplify the registration process please fill in the pre- registration form and present that to the registration desk with your \$20.00 entry fee when you arrive (*Editors note; contact Colin Hey for a copy or pick up from Idlewood*).

We will be pleased to see you all on the 30th April to enjoy the company of likeminded enthusiasts with lots of great cars to look at while having the opportunity of viewing an interest / hobby of others. Encourage a friend to bring their car and family.

Regards, Owen Moore

Co - Convenor

Ph 03-308-3442 / 0274344797

Email: owen@moorepark.net.nz

Saturday 13th May - Working Bee at Idlewood, followed by committee meeting.

The usual working bee/social opportunity/parts buying and sorting session. Starts about 9.30am. Morning tea is provided, and those who wish to can stay on for lunch and the branch committee meeting straight afterwards.

Wednesday 17th May - Mid-week run to the new Kirwee Hotel and café (Thirsty Acres) for a pub lunch. Meet with the ‘midweekers’ at Idlewood at 11.00 (or 10.30 if you would like morning tea first) or go straight to Kirwee to arrive by 12.00pm.

Sunday 21st May - Old Cars, Bikes and Coffee

At the VCC Grounds, McLeans Island.

Saturday 10th June - Working Bee at Idlewood, followed by committee meeting. (same details as May meeting above)

Sunday 25th June - Short Club Run followed by lunch - Advance notice

Meet at the Belfast Hotel car park at the start of the motorway at 11.00am. The run will be finishing at a Hotel probably in the Rangiora area for lunch. A special note: the Christchurch Branch will be subsidising this meal, and we’d love to see as many as possible there to enjoy the time together. A great opportunity to meet some of our newer members.

Saturday 8th July - Working Bee at Idlewood, followed by committee meeting. (same details as May meeting above)

BRANCH NEWS and EVENTS – Christchurch Branch, continued

Friday 14th July – Matariki Day

We are having not a Matariki Day but a Moto-Wrecki Day, the same as we did last year. We would like to see another of the dead parts cars behind the containers pulled apart for the removal of useful parts, and its derelict body readied for transport to the Scrap Dealers. Members that think they might be able to assist, even if it is only as a Tool Boy, Wreckers Assistant, or even just to dispense soup & buns at lunchtime, we would love to see you along at Idlewood. Any time from 9.00am onwards. Just bring a bite to eat (dependent upon the length of time you have available), some warm clothes and overalls. The deed will be done in the garage, so all under-cover.

Sunday 16th July Old Cars Bikes & Coffee at the VCC grounds.

Sunday 31st July – Christchurch Branch AGM, to be held at the Caaravan Club clubrooms right opposite Idlewood. Meet at 12.00pm for a light lunch (provided), with the meeting getting underway at 1.30pm. This is the one time of year we seek your feedback about how the club is being run and perhaps things you want to change and/or do differently. All members are encouraged to be there.

BRANCH NEWS and EVENTS – Southern Region

Southern Regional Branch

At last we have TAKE OFF for 2023, the Southern Branch had our first run for 2023. Well attended with ten Wolseleys, one Vanden Plas, and two moderns including an ex-Government Limousine driven by our secretary Fergus Syme.



We are thankful to Bernie and Elaine, Trevor and Dot for organising a great April 1st run, complete with misleading instructions, on purpose????

We drove down the peninsula to Portobello for an excellent lunch then on to Trevor and Dot's to view their neat and tidy sheds full of a selection of USA cars and memorabilia. Then we continued further down the coast to Long Beach to Bernie and Elaine's collection, once again a very tidy set up!! The sun was out, 20 degrees, as we then finished

BRANCH NEWS and EVENTS – Southern Region, continued

with a nice catch up chat and afternoon tea at the Post-Vintage and Classic Car Club's club rooms.



Left - Fergus and his ex-Govt Limo – wonder how many big deals have been done in the back of that one?

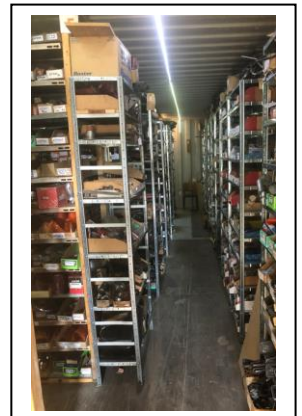
Below left – no man-cave is complete without it's own speed camera.

Below right – another shot of the assembled group.



SPARES NEWS

Our spares department has been quite busy lately so there's obviously a number of our members who spent time over Christmas and the New Year attending to maintenance and repairs on their cars. ***Can I please re-iterate that it's best if you send your requests by email*** – these are monitored by Jonathan and myself usually daily so we will get back to you quickly. Generally spares are collected from Idlewood on Wednesdays and Saturdays and dispatched as soon as possible. By emailing them we have a written record of your requests and can close them out when dealt with. The email address is wolseley.spares.nz@gmail.com



Just a reminder too – if you are purchasing exchange items (usually brake parts, steering joints and shock absorbers), please return your used parts as soon as possible, and PLEASE ensure they are clean. We recently received back some shock absorbers that were caked in oil and dirt and these were charged out at an extra \$30 for cleaning by the reconditioning business, which is a cost we have to recover from the person who sent them.

My 1930 Wolseley Hornet Van – by Rod Baxter

My name is Rod Baxter and I live with my wife in Palmerston North, a city of the Manawatu region located in the lower half of the North Island of New Zealand. I grew up in the Wairarapa region which is located south-east of Palmerston North. This region includes the towns of Masterton, Carterton, Featherston and Martinborough. I am an active member of the Wolseley Car Club New Zealand Incorporated.

My father was passionate about vintage vehicles and had purchased a 1930 Wolseley Hornet van which had a seized motor in pieces. He had the van stored in a small carport at my grandmother's house in Carterton. My older brother and I used to play in it and pretend we were off to fight fires in our "fire engine". I always liked to climb the steel poles that supported the carport roof then slid down and into the driver's seat and off we would race to the fire.

My grandmother passed away when I was 6 years old in 1968. After she passed, her then-husband (my father's step-father) told him the van must be removed from the property. My father gave up his dream of restoring the van and donated it to Southward's Car Museum. Southward's is located north of Wellington city in Paraparaumu and the van sat untouched in its basement for the next 37 years.

Around 2005 during a visit to the Museum with the Manawatu Mercedes Benz Club which also included the workshop area, I asked one of the staff members if the van was still held



My 1930 Wolseley Hornet bread van in its unrestored state 2005. We had just got it home to Palmerston North from Southward's Museum.

at the Museum. They suggested there was a vehicle that fitted the description in the basement, and they would not be going to restore it. I was offered the 1930 Wolseley Hornet as Southward's records showed that it had been donated by my father and who was also a friend of Len Southward, owner and founder of Southward's Museum. It has taken the best part of 14 years to finally get the van running and legal for New Zealand roads. I had the engine repaired, the body repainted and roof refurbished, added new tyres and went through the process to get it registered to drive on New Zealand roads. Because the van had formerly been registered in New

Zealand, I was able to include proof of this in the application along with an account of its history and an inspector's report about its roadworthiness. The last year of registration was 1944 as shown by a sticker on the van's windscreen. I had it re-registered for New Zealand roads in 2019 and it continues to be registered today.

Included with this article are various photos of the van's condition and its history. The van originally was brought into New Zealand as a chassis and was built up by order to be used as a bread van by the Ferris Bakery, located in Masterton. In the early 1900's it was

My 1930 Wolseley Hornet Van – by Rod Baxter, continued

difficult to get vehicles into New Zealand and many vehicles would come in as a chassis and be built up for purpose the vehicle was required for. Coachbuilders assembled motor vehicles from imported parts.

I appreciate the help I have had from the New Zealand Wolseley Car Club, and in particular Ivan McCutcheon from Dannevirke.

Rod Baxter.



Left - This image is of the windscreen sticker showing that the last year of registration was 1944. This was

part of the evidence used to show the van had been registered for New Zealand Roads during the process to have it re-registered. *Right*, The official engine bay plate showing factory details.

e. Monday, March 1, 1965.

OLD BAKERY HOUSE TO MAKE WAY FOR ROAD EXTENSION



After 46 years of her life in the bakery house in High Street, Masterton, Mrs. M. W. Ferris is soon to move out and take a small modern cottage. The extension of Chapel Street through in a straight line to High Street to by-pass the traffic bottleneck at the Kuripuni triangle means her house has to go. Born in Masterton, Mrs. Ferris at 77 is still a spry woman. When she moved into the house attached to the bakery which her husband operated in 1920, there were few houses nearby. Now, with Rugby Street laid and other sections nearby populated the area is a densely settled residential suburb. Her husband, an Australian, opened a bakery at the site of the present shop which closed about a year ago, after moving from a bakehouse on Renall and Queen Street corner in 1920. He operated the bakery business until about ten years ago when his son Wally took over. Mr. Wally Ferris now works at a large Masterton baking firm, and his son at another. Mr. Ferris senior died about four years ago. Mrs. Ferris, although now living alone, has six of her family of eight children, now grown, and with their own families, still in Masterton. The old bakehouse, as to be pulled down, followed soon afterwards by the shop fronting High Street, and then the house.

An excerpt from the Wairarapa Times Age, 1st March 1965.

My 1930 Wolseley Hornet Van – by Rod Baxter, continued



Below - My 1930 Wolseley Hornet van in its present condition today. Left, this image circa 1930 shows the drivers Charlie Roff and Roy Taylor in front of the van.



RYDERS RETURN TO NZ. PART ONE – SOUTH ISLAND TOUR, 17th January – 6th February 2023

By Jenny Ryder

We enjoyed our 2017 trip to New Zealand so much that we were determined to return to see people and visit places we'd been before as well as the ones we'd missed last time. After being thwarted by Covid and having to wait two more years that we had hoped, we finally stepped back onto NZ soil on Tuesday 17 January 2023.

RYDERS RETURN TO NZ - continued

We had decided to retrace our 2017 route by landing in Christchurch, which would allow us to start our six week adventure with the Dunedin to Brighton Veteran Car Rally and also take in the Napier Art Deco Rally weekend in February – having missed both of these events previously. Colin Hey very kindly met us from the airport in his Wolseley Six so that got us off to a good start!

We stayed with Colin and Jenny for a 3 nights and on the Wednesday we were loaned their 1500 Mk I to take part in a local club run. We met up with some Members at Idlewood, which we had visited in 2017 and accompanied them to visit Roy Grainger's private collection (mainly Fords) followed by a picnic lunch at the Tai Tapu Domain. It was a very pleasant shock to be plunged into NZ summer and switch to shorts and tee shirts after the cold, miserable UK winter weather we had left behind!

The next day we borrowed Jenny's modern car to drive into Christchurch to see how the rebuilding was progressing since our last visit. Certainly a more positive situation now but still a long way to go. We found Quake City very informative and the personal stories recounted by survivors were particularly emotive.

On Friday we followed Colin and Jenny down to Dunedin for the weekend. We met up



Colin & Graham in the 12/16 Wolseley in Dunedin



Not a veteran burnout – just steam! The start of the Dunedin to Brighton – Graham and Jenny are in the back of the Stanley

with others en route, including Alan and Lesley in their Stanley Steam Car, which they kindly agreed to let us ride in for the Brighton Run. Saturday was dry but windy and it was a bracing ride. We were pleased to see the Steam Car featured in the Otago Daily Times the following Monday!

RYDERS RETURN TO NZ - continued

After a busy weekend with the Run, Dinner and Sunday drive out to Carey's Bay Hotel for lunch, followed by a tour of the Peninsula and a visit to John and Rosie McAdam, we set off on our own for Invercargill. Here we finally got to the Hayes Hardware Store to see the Fastest Indian Display which was on the bucket list, and made a return visit to the Bill Richardson Transport World.

After Invercargill we headed north to Queenstown, going up the Gondola and across the lake on TSS Earnslaw, having previously visited Milford Sound and Wanaka instead. Following a couple of hours at the excellent Arrowtown Museum on a drizzly morning, our next stop was Omarama by which time the sun had come back out. Next day we drove up to Mount Cook Village then on to Lake Tekapo. Good weather stayed with us through Fairlie where we visited the surprisingly large Heritage Museum which included Wolseley sheep-shearing tools before reaching The Plains



Graham tries out Burt's Indian for size in Invercargill

Museum at Tinwald outside Ashburton. It transpired a car show was on there and we bumped into Sharon and Danny O'Malley who were there with their "Boss Hogg" 1959 Cadillac

Heading inland, we reached Murchison where we were delighted to find the new Hot Pools complex for a relaxing couple of hours. The Inland Scenic Route took us to Culverden where a storm broke soon after we arrived so we didn't move from the motel! The weather was still drizzly and cloudy when we arrived in Kaikoura where we had a Dolphin Encounter booked. It was slightly clearer on the morning of the boat trip but the "moderate" sea was quite rough and we were glad to get back on dry land when we heard the afternoon boat trip had been cancelled. Everyone else on our boat swam with the dolphins but we just watched and did see an albatross and a small hump-back whale, as well as dolphins doing flips.

That afternoon we visited the Kaikoura Museum where there was a good display about the 2016 Earthquake as well as local and national history displays.

Next stop was Blenheim where we called at the VCC club rooms/display at Brayshaw as well as taking in the Farm Machinery Museum and Heritage Museum. Before we left the area we visited the excellent Classic Car Museum and Aviation Centre at Omaka, having enjoyed Bed & Breakfast in Renwick as a change from self-catering in motels up till then. Our final two nights on the road took us to Murchison and Lake Brunner before returning via Arthur's Pass to Christchurch. Unfortunately the inclement weather that day meant we

RYDERS RETURN TO NZ - continued

didn't get the best views through the Pass but we still marvelled at the road and rail routes that had been cut through by pioneering forefathers.

Another classic car gathering on Waitangi Day meant we were driven back to the airport by Colin in the 6/99 after a wonderful 3 weeks on South Island. We met and were reunited with so many lovely Wolseley and other classic car people; NZ residents and UK folk who had either emigrated here or were on holiday like us. We saw spectacular scenery and enjoyed mostly glorious weather. We were wonderfully looked-after by Colin and Jenny. We learned even more about New Zealand and left looking forward to the next 3 weeks on North Island – next instalment to follow!
Jenny & Graham



Jenny & Graham Ryder – intrepid NZ adventurers

Buy and Sell

Wolseley 1500 – 1959, restored by previous owner, and owned by present owner since January 2012 - brought from Jesmond Micallef at Waimak Classic Cars. This car has been well loved and it is a delightful drive - a lot of fun and people just love the colour and how lovely it is. We have kept it tidy, garaged and cared for. Now on Trade Me. Registration # AN2849, Chassis # WAI/C/33073. Contact Keryn Higgs, Phone 021 202 3622. Car is in West Eyreton, Canterbury.



Editor has further photos available if needed or see Trade Me listing.

Buy and Sell - continued

For Sale – Wolseley 4/44 - Circumstances force sale at very cheap price 80% restored, interior and minor finishing required. \$3,000 to member. Contact Garry McDonald, Tauranga. Email wheeltechinfo@gmail.com



Wolseley 18/85. Owned by a former club member who has recently passed away. In great condition with current WOF and Registration, just needs a few finer details sorted to make it exceptionally good. Auto with Power Steer. In the first instance please contact Derek Dixon, email thedixons@xtra.co.nz who is assisting the owner. Car is in the Waikato area.



Wanted – a pair of good front seat runners for a Wolseley 16/60 or 15/60. Please contact Fraser Buchanan, email: facb@xtra.co.nz

Buy and Sell - continued

For Sale – Wolseley 1300 Manual

Low mileage car (47,000 miles) in very good original condition with current WOF and registration. Paintwork is OK but could do with some TLC and touch-up work, no rust and runs very well. Very original and tidy inside, good home wanted. Asking price is \$5,000. In the first instance please contact Colin Hey who can give you more information and put you in touch with the owner. Car is in Christchurch.



Two Wolseleys attended this year's Oamaru All British Day – here is one of them, Derek and Lee Brehaut with their 25HP Series II

The other was John Macadam in his 6/90 Series 1

Biofuels Mandate Delayed a Year

Roy Hughes, Submissions Secretary NZFoMC

Implementation of the Sustainable Biofuels Obligation which will compel fuel wholesalers to reduce fossil fuel carbon emissions by blending biofuels into their petrol and diesel supplies, is being put on hold until 1 April 2024. Announcing the postponement, Energy Minister Megan Woods said, “while biofuels will account for a very small part of the overall fuel price, we recognise that motorists don’t need any extra costs in the current cost of living crisis.”

In the expectation fossil fuels will continue playing a crucial role in New Zealand’s transport system, Minister Woods said other initiatives to achieve the proposed emissions budgets are being developed. The delay will also allow wholesalers more time to instal the necessary infrastructure and source high quality feedstocks.

From the launch of the mandate fuel wholesalers will be required to meet emissions reduction targets of 2.4% in 2024 and 3.5% in 2025. Provisional targets will be set for 2026 and beyond, increasing up to 9.0% by 2035, with adjustments in the intervening years to offset the delay in implementation.

“Biofuels are a great way to reduce emissions without replacing existing ICE vehicles. Biofuels alone won’t get us to net zero, but they are an important part of the toolkit to help us manage a fair, inclusive and equitable transition to a low-emissions future,” said the Energy Minister. “The Sustainable Biofuels Obligation will play a significant role in supporting this and delivering the Government’s Emissions Reduction Plan (ERP); it will prevent around one million tonnes of emissions from cars, trucks, trains and ships over the first two years and up to nine million tonnes by 2035.”

Alternative to Fossil Fuels

Biofuels are renewable, low-emissions alternatives to petrol and diesel derived from plants, animal wastes, forest residues and other organic material. But as some biofuel feedstocks are more environmentally sustainable than other options the Government intends to introduce regulations to set strict sustainability criteria.

For information - continued

Ironically manufacture of some biofuels can often result in the production of more carbon emissions than the use of oil-based fuels. So the Government is preparing regulations to limit the total amount of food and feed-based biofuels, and exclude feedstocks linked to deforestation of old-growth forests, such as the development of palm oil plantations.

The Sustainable Biofuels Obligation Bill had its first reading in Parliament last November with Select Committee consideration of submissions continuing into January. Regulations are also being developed to support the Bill.

Strict emissions reduction targets for the first two years of the Obligation are being included in the new Act, with provisional targets set for 2026 to 2035. The sustainability criteria will exclude or limit the use of feedstocks associated with indirect land use change (such as those which cause deforestation) and those which could impact food production or indigenous biodiversity. And it allows regulations to be developed to determine which products may meet the sustainability criteria, and what types of waste products may be excluded.

Government Commitment

Transport Minister Michael Wood has committed the Government to ensuring fuels suitable for use in heritage vehicles will continue to be available after the mandate is in place. Biofuels can damage or accelerate the deterioration of components of the fuel systems in a range of vehicles manufactured prior to 2010.

How a suitable alternative to biofuels for use in heritage vehicles will be provided has not yet been determined but the 12-month delay in imposing the mandate does provide more time to negotiate practical and affordable options. The NZFoMC will continue to monitor developments and advise classic vehicle owners on which of the available fuels being provided in the future will be safe to use.

THE END



The  *Word*

*OFFICIAL NEWSLETTER OF THE
WOLSELEY CAR CLUB NEW ZEALAND INC*

If unclaimed, please return to:

The National Secretary
Michael Kruse
297 Huatoki Street,
New Plymouth 4310

Registered at Post Office HQ Wellington as a Magazine